

AN EXCLUSIVE-HIRE 120 ACRE
COTSWOLDS FARM ESTATE
NEAR CHIPPING CAMPDEN



THE PEOPLE

Norton Grounds is owned and managed by the third generation of the Valender family, Andrew, Clare and their son Guy.

Norton Grounds is a 120 acre Cotswolds arable farm estate dating back hundreds of years including arable farmland, woodland and an equestrian centre run by Clare with an outdoor arena, grass dressage arena, show jumps, horse walker and access to miles of offroad hacking in the Gloucestershire countryside.

Having recently re-imagined and converted many of the spaces on the estate to provide a new and unique event venue with accommodation they are looking forward to hosting visitors and guests to share this very special place in the Cotswolds, designated as an Area of Outstanding Natural Beauty.



THE PLACE

Norton Grounds is a 7 minute drive from Chipping Campden and just 20 minutes from Stratford upon Avon. Bristol, Birmingham and Oxford are all just 75 minutes away by road. Honeybourne station is a 10 minute drive with 90 minute direct connection to London Paddington.

A courtesy pick-up and drop-off service is available. There is extensive parking onsite including under-cover with EV charging available. If arriving by helicopter then we have 1 and 5 acre landing zones within minutes walk of the accommodation and venue spaces. Flight time from Battersea London Heliport is just 30 minutes.

Our nearest airfield for small/light jets/turbo-props is Wellesbourne Montford, a 30 minute drive.



THE PLANET

We make no apologies for stating our intentions for creating a sustainable and ecologically sound future up front rather than as with many venues, just positioning as an afterthought or appendix!

We are proud to be the third generation to be custodians of our 120 acre farm and estate at Norton Grounds. As arable farmers we are more aware than most of the effect even just small positive measures to our environment can make. Our conversion of ancient farm buildings to events spaces and accommodation was sensitively designed to reuse as much of the original fabric of buildings so timber and stone to clad walls and using sympathetic and water-based paints and natural materials in the restoration.

We believe and live by an ethos

PLANET, PLACE, PEOPLE

which encompasses our commitment to a sustainable and environmentally friendly future.

Much of our electricity is solar generated and LED lighting and sensors are used throughout.

Our gardens and grounds are irrigated by water from the estate streams using a system of pumps and continually monitored for leakages etc.

Manure from our equestrian centre is used annually as fertiliser on our fields.

Stoves in accommodation areas use timber from fallen trees on the estate and our woodland.

All laundry is washed at lower temperatures using bio-based products.

All toiletries throughout venue and accommodation are refillable.



We believe education and understanding fuel change. By passing on knowledge and skills and sharing resources and ideas, we hope to encourage a connection to nature and an instinct to protect it.

All of our accommodation has access to many types of herbs in raised beds and we encourage guests to use them during their time with us.

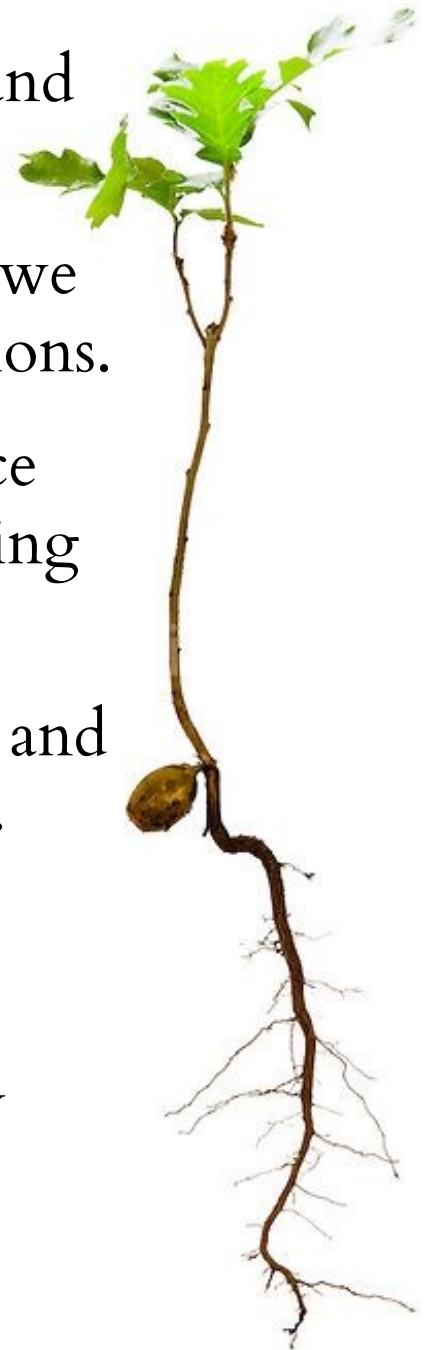
We are committed to reducing food mileage. Ensuring where possible that we source from local suppliers which in turn reduces food related carbon emissions.

Our menus, we work with our suppliers and contractors to ensure we reduce potential waste by catering specifically to the number of guests and promoting seasonal produce.

We continually strive to reduce and remove a reliance on single use plastics and catering disposables, recycling and using bio-degradable whenever possible. Glassware is used for water in meetings. Cutlery is non-plastic and reusable.

Zero waste goes to landfill.

We have excellent public transport connections with road and rail links. EV charging on-site and within 5 mile radius. Accommodation on-site within sight of venue spaces. Additional if required is within 5 mile radius.



Positioned around the farm and estate you will see bird feeders, bat boxes and bee hives.

The large pond and streams in particular attract newts and dragonflies.

We have an ongoing tree and wildflower planting plan aimed at making us carbon-neutral, to this end where possible clients are encouraged on their first visit to plant a named and dated tree.

We believe education is key to a sustainable and secure future and we welcome children and families to visit the estate.

PEOPLE creating a lasting legacy to PLACE and PLANET.



THE EVENT SPACES

Our Cotswold stone Threshing Barn and Cow Shed as well as a permanent Tipi offer flexible and spacious event spaces that can easily be dressed and themed.



THE THRESHING BARN



THE THRESHING BARN

Hosts up to 80 seated
and 150 standing.

Double doors with
ramp access into
grounds and glazed
French windows.

Underfloor heating.

Kitchens with power
and water supply.



THE THRESHING BARN



THE THRESHING BARN



Large oak concertina doors opening into The Cow Shed, a true 'wow' reveal.

Minstrels Gallery with access to toilets.

Disabled access and toilets on ground floor.



THE COW SHED



THE COW SHED

Hosts up to 130 seated and 150 standing.

Leather banquette seating runs length of space.

Large doors with ramp access into grounds allowing access for vehicles, sets etc.

Polished concrete floor. Recycled wood cladding and hessian ceiling drapes.

Access to kitchens with power and water.



THE COW SHED



THE TIPI



THE TIPI

Set in its own landscaped gardens with stunning views over the estate.

Hosts up to 60 guests standing or 45 seated.

Perfect setting for informal meeting, presentations or activities such as yoga.

Catering can be provided by one of our street food style suppliers.



THE ACCOMMODATION



THE ACCOMMODATION

Our accommodation once housed pigs, cattle, poultry and doves and many of the features and architectural details have been retained in our sensitive and sustainable 'modern rustic' approach to their conversion.

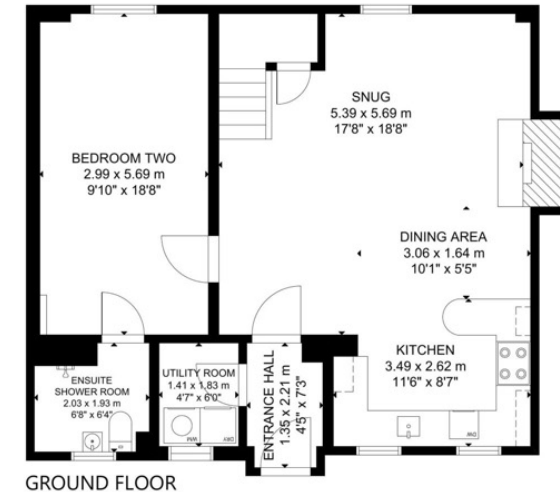


THE ACCOMMODATION



Dovecote (sleeps 6+)

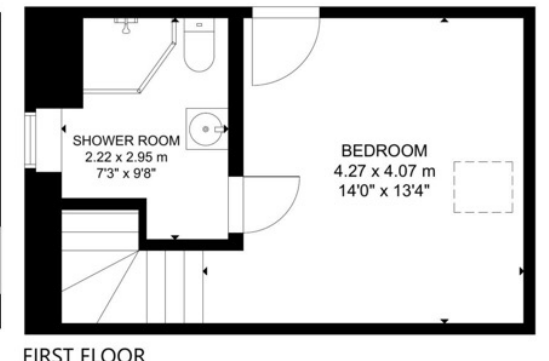
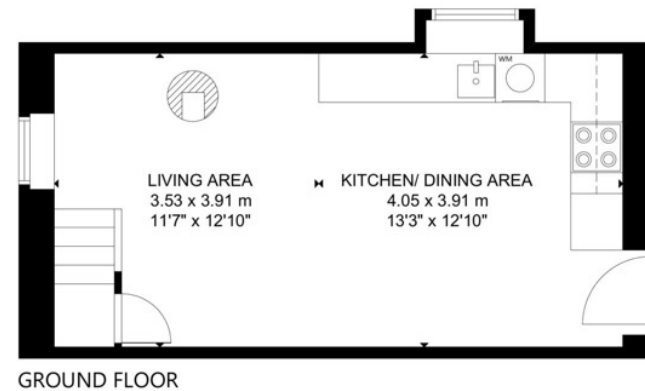
Conversion part funded by the European Agricultural fund for Rural developments. Investing in rural areas.



Old Mill Barn (sleeps 4+)



Groves Barn (sleeps 8+)



Boddingtons Barn (sleeps 2)

Up to 20 guests can be accommodated in our 4 self-catering style cottages that open on to the gardens and adjoining barns.

We have excellent relationships within a 15 minutes drive should additional accommodation be required, from Airbnb to 4 and 5 star hotels.

THE ACCOMMODATION

Groves Barn



Dovecote



Groves Barn



Groves Barn



THE ACCOMMODATION



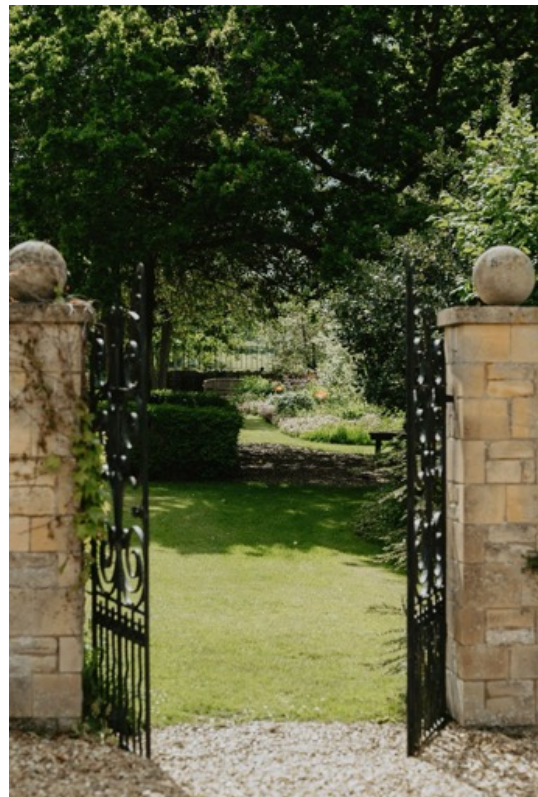
Groves Barn



Boddingtons Barn

Old Mill Barn

Dovecote



THE GROUNDS

The landscaped gardens, terraces and farmland accessible from the Barns and tipi have far-reaching views to the Malvern Hills.

They provide great break-out and leisure spaces for drinks receptions, street-food style trucks etc as well as a range of outdoor activities in a secluded rural environment.



THE GROUNDS

Flexible spaces to communicate, network, reward, celebrate and educate.

Product launches including automotive with gated and secure accessible access to barns and gardens.

Corporate away-days.

Team-building events including archery, falconry, off-roading, clay-pigeon shooting, geese herding and more!

Business meetings.

Conferences, indoors and out.

Workshops.

Gala dinners.

Charity events.

Award ceremonies.

Networking events.

Festivals, Christmas and summer parties.



THE GROUNDS



THE FOOD AND DRINK

Working with our local preferred producers and suppliers we can offer a range of dining experiences and cuisines indoors and out.

From drinks receptions and informal festival style barbecues to gala dinners we will always try to source our produce and ingredients both locally and seasonally.



THE FOOD AND DRINK



THE DETAIL

For further information, costings and availability please email us.

In the meantime a birds-eye view of Norton Grounds can be [viewed here](#) that highlights particular spaces on the estate.

It also features lines from Nobel Prize winning poet TS Eliot who was inspired by his walks around the estate as well as the Chipping Campden area.

info@nortongrounds.com

Find us...

<https://what3words.com/enchanted.archives.enjoy>

<https://maps.app.goo.gl/VUNtjz5XQegt9nUL9>

